

Delaware Union - Play On!

This document is to serve as a guideline for Delaware Union players and staff to return soccer activities. All phases and guidelines are based on timelines set by the State of Delaware Guidelines, DYSA and US Soccer. At any point, based on state/local mandate or advice, timelines could be changed or adjusted.

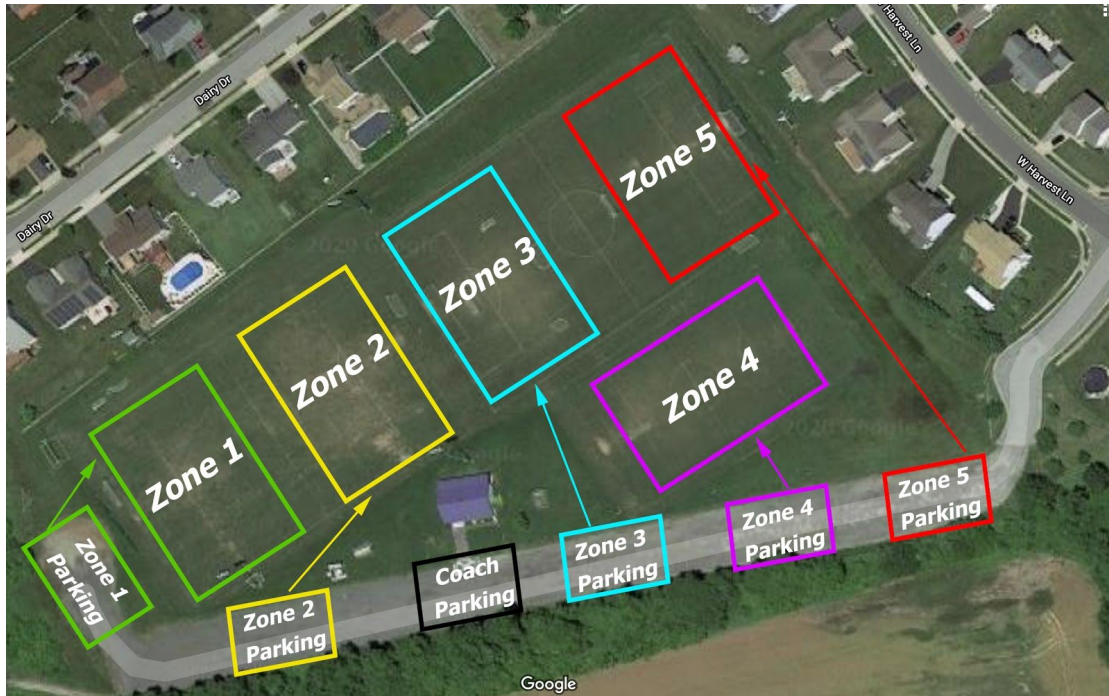
Training and Game Guidelines Beginning on March 1, 2021

- Training Sessions should be of 18 players per zone and plus coaching staff
- Following MV Social Distancing Plan for training and parking information (See Page 2)
- Voluntary for players to attend
- Players will have their own space to place their bag and water and it will be socially distant from other players.
- Players and staff must conduct a health self-assessment before each practice or game in the state of Delaware using Teamsnap
- Coaches must wear masks during training and games
- Players must wear masks prior to and immediately after training and anytime when they are not participating in a game or activity. This includes walking to and from their vehicle
- When social distance can be maintained, masks can be removed
- Players have the option to wear a mask while participating in practices and games
- Hand sanitizer will be available for players and staff
- Parents/guardians must remain in their cars or drop players off during practices
- A maximum of two spectators shall attend practices or games per player
- Spectators must wear a mask at all times
- Weekly reminders of these guidelines will be sent out to players and families
- Players are NOT to share drinks, food, equipment, or clothing at any time.
- No high fives, hugs, etc. until further notice.
- Coaching staff must sanitize equipment after each use.
- Coaches, staff, officials, parents and players must stay home when sick, contact the team safety and hygiene manager if they test positive for COVID-19, and to inform DPH about possible exposures - Safety@delawareunion.com



Delaware Union - Play On!

Middletown Village Social Distancing Plan



Each training zone is indicated by a different color and designated parking zone. Parents should park in their designated parking zone and remain in their car throughout the practice. Players should follow the arrows when walking from the parking zone to the training zone.

