

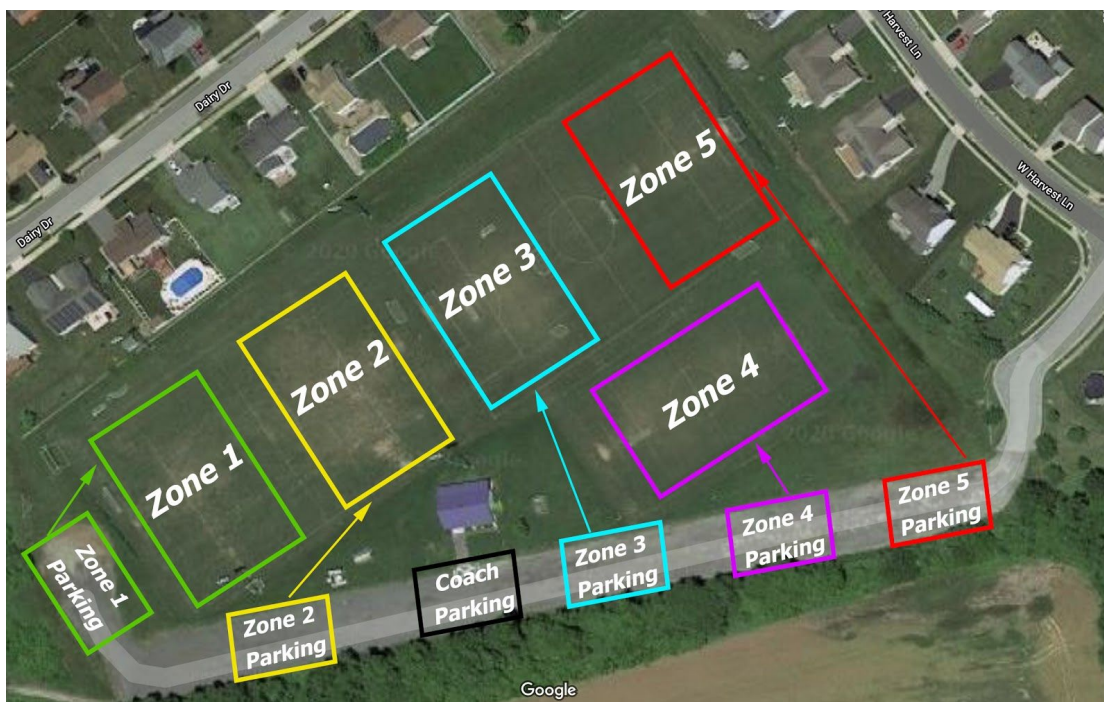
Delaware Union - Play On!

This document is to serve as a guideline for Delaware Union players and staff to return soccer activities. All phases and guidelines are based on timelines set by the State of Delaware Guidelines, DYSA and US Soccer. At any point, based on state/local mandate or advice, timelines could be changed or adjusted.

Phase 3 - July 13 - August 15 - Team Training and Camps

- Soccer camps resume following State of Delaware Guidelines (See page 2)
 - Set number of players per camp
 - Players divided into small groups for all camp days and assigned to a training zone
- Waiver must be signed by parents
- Social distancing guidelines applied based on state/local guidance
- Coaches continue to wear masks
- Players must bring the following items for each day of camp
 - Filled up water bottle for the entire camp day (Refill stations will not be available)
 - Sunblock/bug spray (Staff will not apply either of these to any player)
 - Bagged snack (Snacks are not be shared within players)
 - Pumped up soccer ball if possible
 - Hand sanitizer (Hand Sanitizer stations will also be available for players)

Middletown Village Social Distancing Plan



Delaware Union - Play On!

Each training zone is indicated by a different color and designated parking zone. Parents should park in their designated parking zone. Players should follow the arrows when walking from the parking zone to the training zone.

Reopening Phase for Recreational Camps COVID-19 Guidance - State of Delaware

General Guidance

- Prior to beginning operations, camps must develop a written plan to address all applicable guidance and restrictions for operation. The plan must be available upon request for review by DPH.
- The plan must address, at a minimum:
 - Disinfection procedures and frequency
 - Camper arrival and departure procedures to reduce mixing of classes and close contact
 - Mask guidance and Social distancing during all activities
- Outdoor camps must ensure contingency plans are in place for inclement weather.
- Reduce camp capacity as necessary to accomplish 6 feet separation for indoor and outdoor activities.
- Post signage instructing employees and campers about maintaining 6 feet distance, hand washing, covering coughs and sneezes and to stay home if they are experiencing symptoms of COVID-19.
- Each facility must comply with all other state, county and local requirements.
- Overnight camps must comply with all requirements, including social distancing.

Handwashing and Face Coverings

- Guidance on masks for youth is forthcoming.
- Campers and staff should be encouraged to wash hands for 20 seconds with soap and water throughout the day.
- Hand sanitizer must be available throughout the facility in addition to, but not in place of, handwashing.

Cleaning

- Use an EPA List 6 approved disinfectant for frequently touched surfaces.
- Facility must be cleaned at least once per day.
- High contact surfaces, including but not limited to doorknobs, light switches, and railings, should be cleaned a minimum of twice throughout the day.

Employee and Camper Screening

- Camps should follow DPH Essential Screening Guidance.
- Staff and campers considered vulnerable populations should consider continued shelter in place.
- Those that are sick should not attend camp until cleared by a physician.

Social Distancing

- DPH strongly recommends that cohorts be limited to 15 children plus staff. Cohorts are required to remain stable from one day to the next, meaning the same children and staff should make up one



Delaware Union - Play On!

cohort. Children and staff should not switch between cohorts, and interaction between cohorts should be restricted as much as possible.

- Face coverings must be worn per DPH guidance when social distancing cannot occur.
 - Once groups are assigned, mixing of groups and switching of staff. should be limited to the greatest extent possible to reduce the impact of COVID positives.
- Encourage all staff, patrons, and campers to wash hands often and cover their coughs or sneezes.
- Limit sharing of materials like art supplies or toys. Follow disinfectant guidelines.

